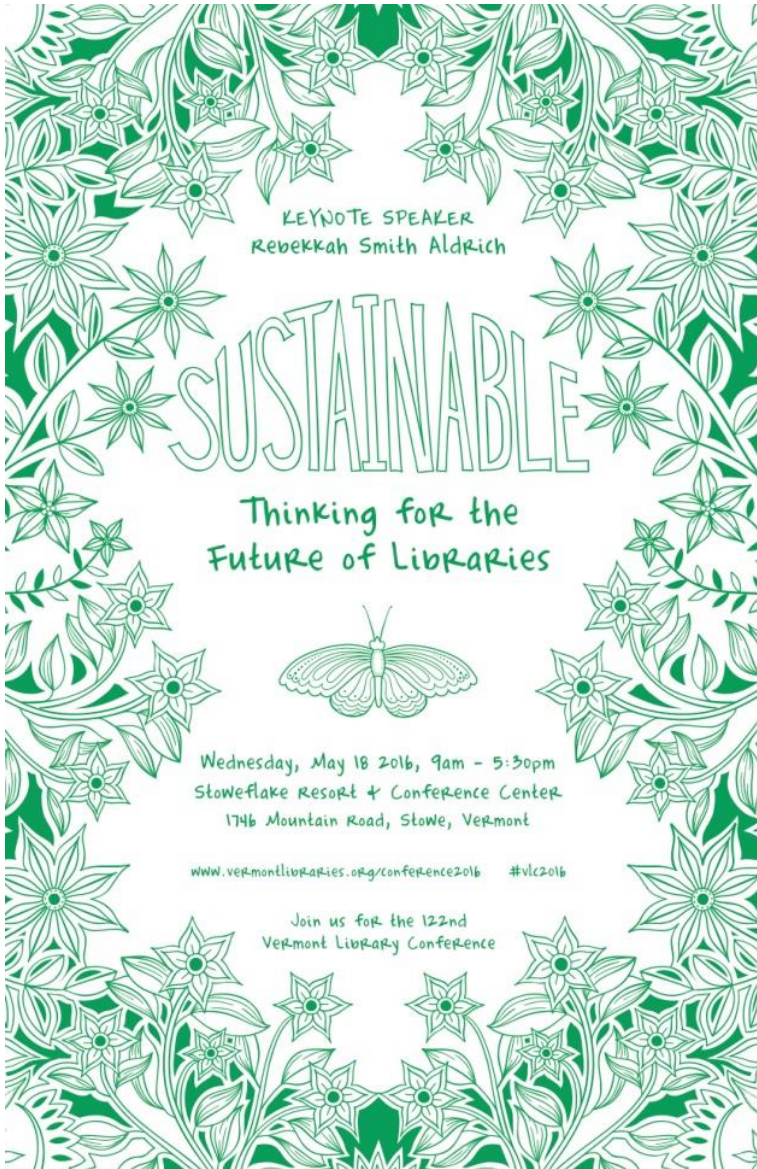




WIDENING THE WELCOME MAT




SUSTAINABILITY



KEYNOTE SPEAKER
Rebekkah Smith Aldrich

SUSTAINABLE

Thinking for the
Future of Libraries



Wednesday, May 18 2016, 9am - 5:30pm
StoweFlake Resort & Conference Center
1746 Mountain Road, Stowe, Vermont

www.vermontlibraries.org/conference2016 #vlc2016

Join us for the 122nd
Vermont Library Conference

LIBRARY TOUR

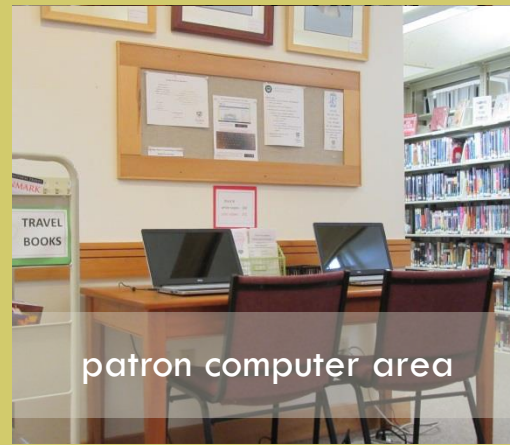


Charlotte
LIBRARY





main room



patron computer area



storytime/lunchroom/storage

PUBLIC SPACES AT PREMIUM

CHARLOTTE LIBRARY STRATEGIC PLAN



Fosters Community Engagement

The library encourages community connections through existing and potential partnerships with individuals, organizations and groups. The library serves a multigenerational population and welcomes new residents.



Promotes Literacy

The library cultivates the creating and sharing of knowledge through its collections of books, digital resources, other media, and literacy-focused programs.



Supports Life-Long Learning

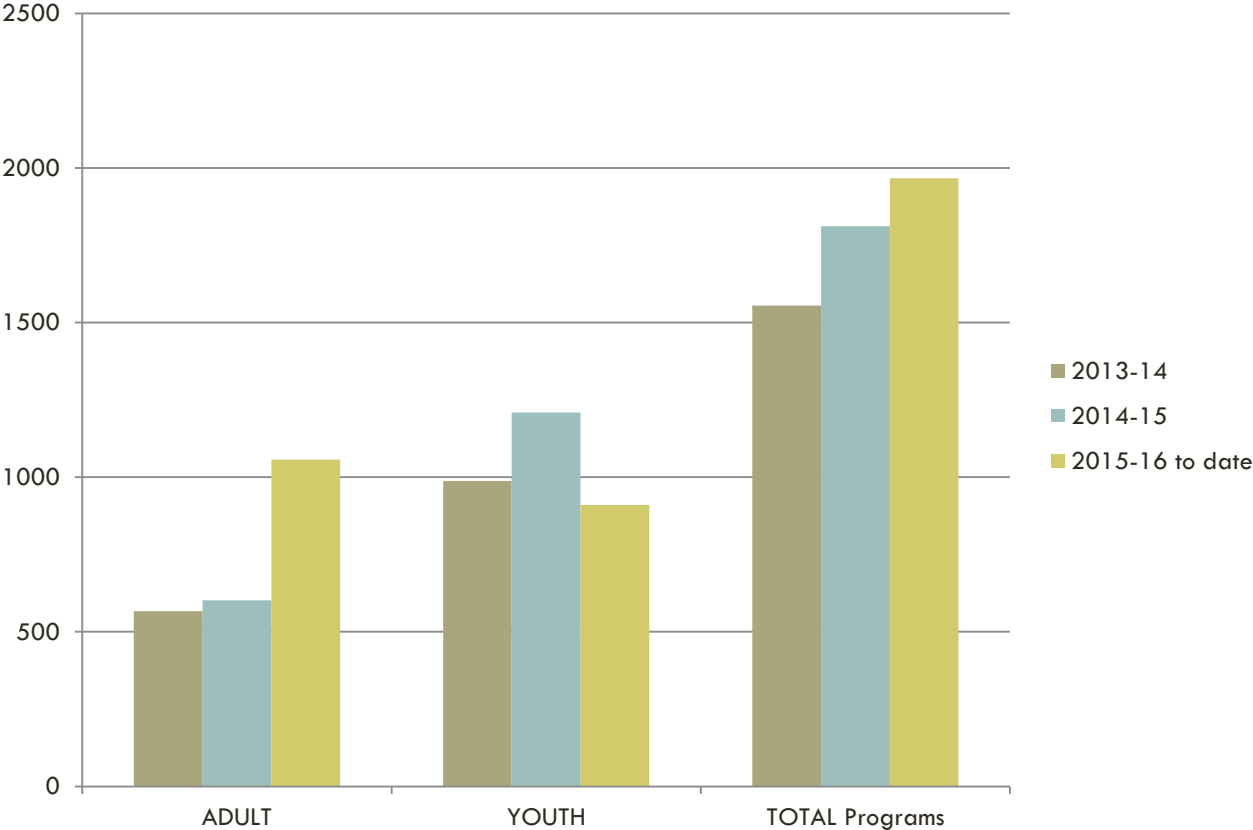
The library provides a center for life-long discovery and learning. The library enriches the imagination, offers diverse viewpoints, and expands opportunities by providing a wealth of information, resources and programs while protecting individual privacy.

Creates a Welcoming and Inclusive Environment

The library provides inviting space for quiet activities, group gatherings, and project work, with convenient hours of operation and digital access for all.

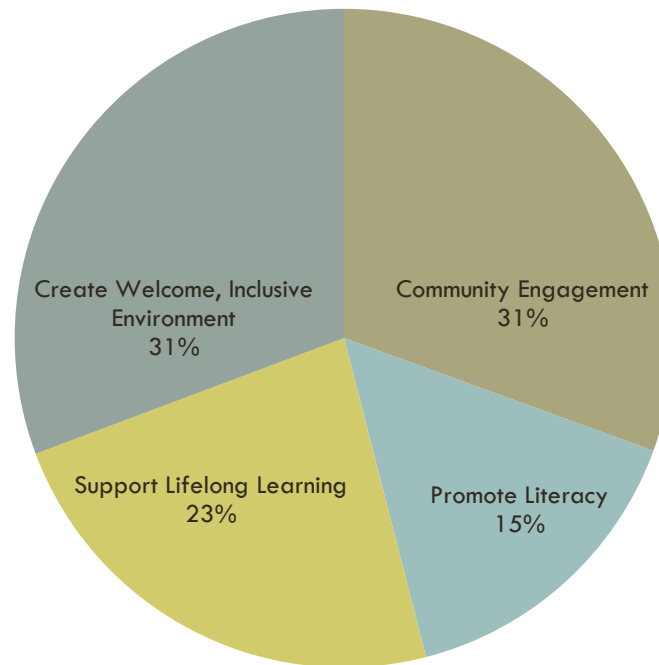


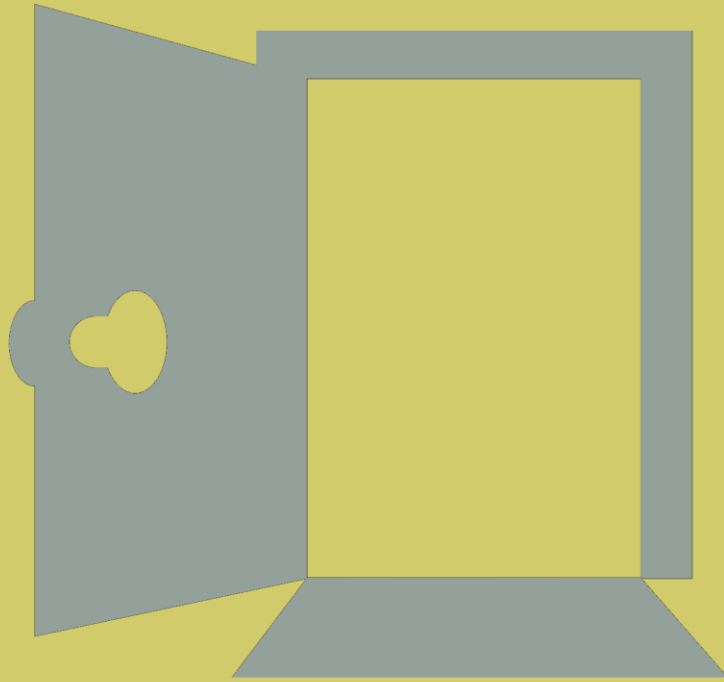
PROGRAM ATTENDANCE



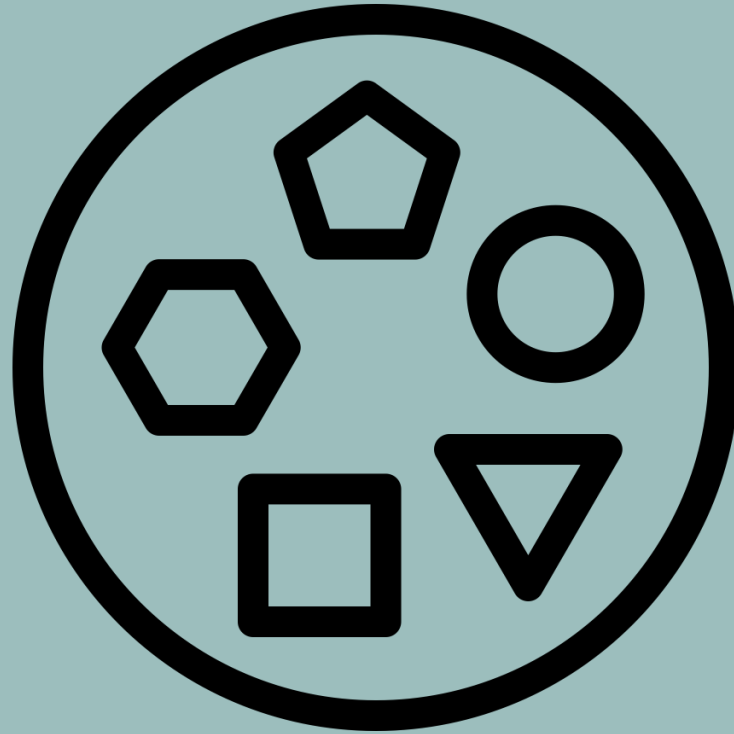
STRATEGIC PLAN FILTER

Programs re: Strategic Plan





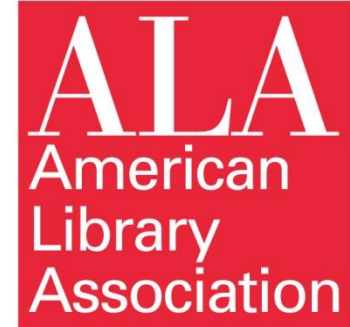
5 FEATURES OF WIDENING YOUR WELCOME MAT



#1 INCLUSION AWARENESS

THINGS TO THINK ABOUT

- *Indicators of openness*
- *Indicators of intentionality*
- *Indicators of inclusion*



VLA INCLUSION COMMITTEE



FOCUS:

Collection development, literacy, the digital divide, and social services.



SOCIAL INCLUSION AUDIT

We hope to run audit in Vermont by 2018

Based on CULC Social Inclusion Audit

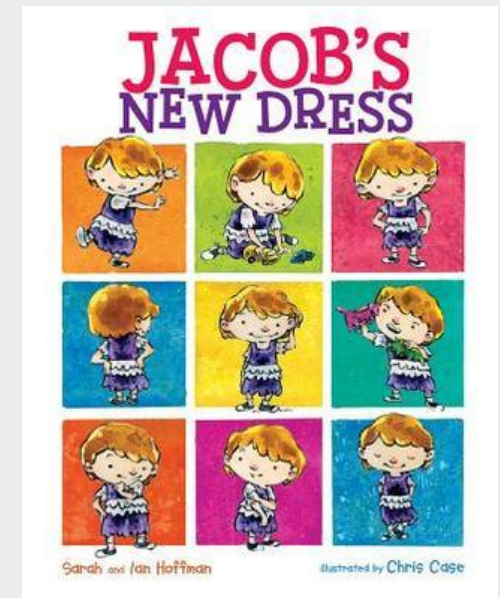
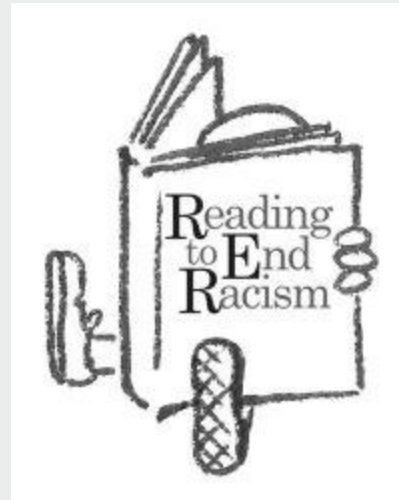
<http://www.siatoolkit.com>



Canadian Urban Libraries Council
Conseil des Bibliothèques Urbaines du Canada

CHARLOTTE CHALLENGES

Divisions in our community: East vs. West Charlotte
Defining inclusion issues can be tricky
Solutions?





Spring Planting 2013: Gardening Gang

#2 COMMUNITY ENGAGEMENT

CONNECTING AT THE LIBRARY



Transition Town
Charlotte

Charlotte
Children's Center



Charlotte Central
School

Charlotte Historical
Society



Shelburne-
Charlotte Garden
Club

EXTENDING LIBRARY REACH



Senior Center

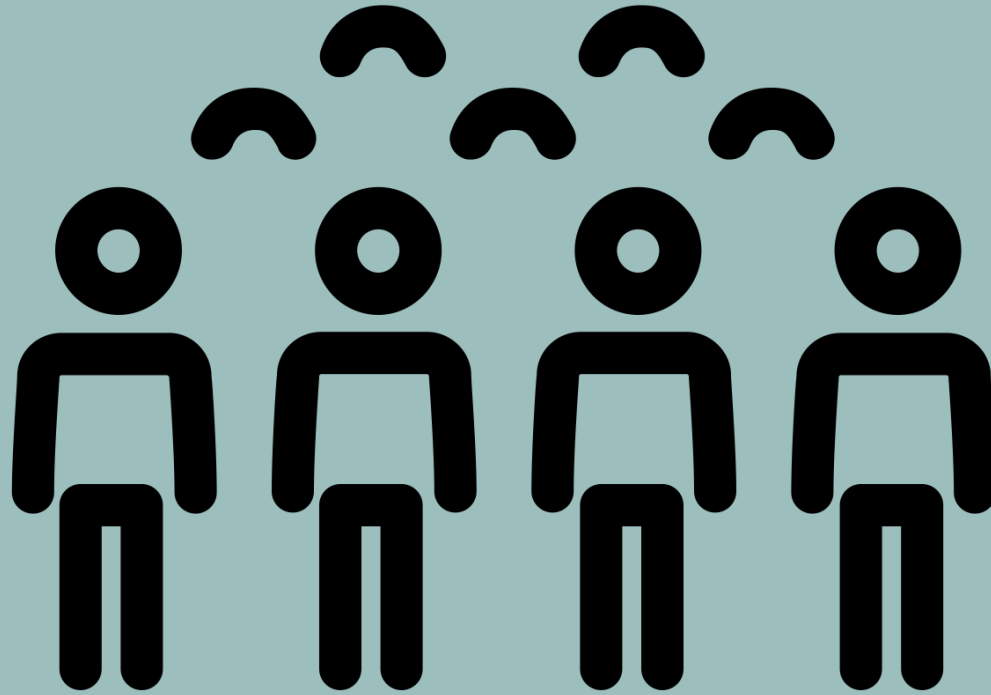
Grange



Food Shelf

Volunteer
Fire & Rescue





3 NEW PATRONS



WHERE ARE THE BOYS?



AT THE LIBRARY!

GIRLS IN TECH PROGRAMS



"In the United States, women hold less than 25% of science, technology, engineering and math (STEM) jobs." -CNN.com

TINKERBELLES





TINKERBELLE INVESTIGATIONS





SENIORS



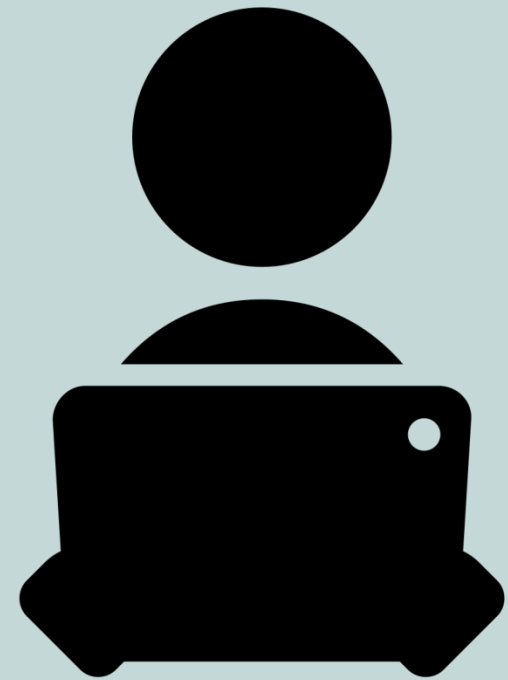
Atul Gawande



Being Mortal

Vermont
READS
Vermont Humanities
2016

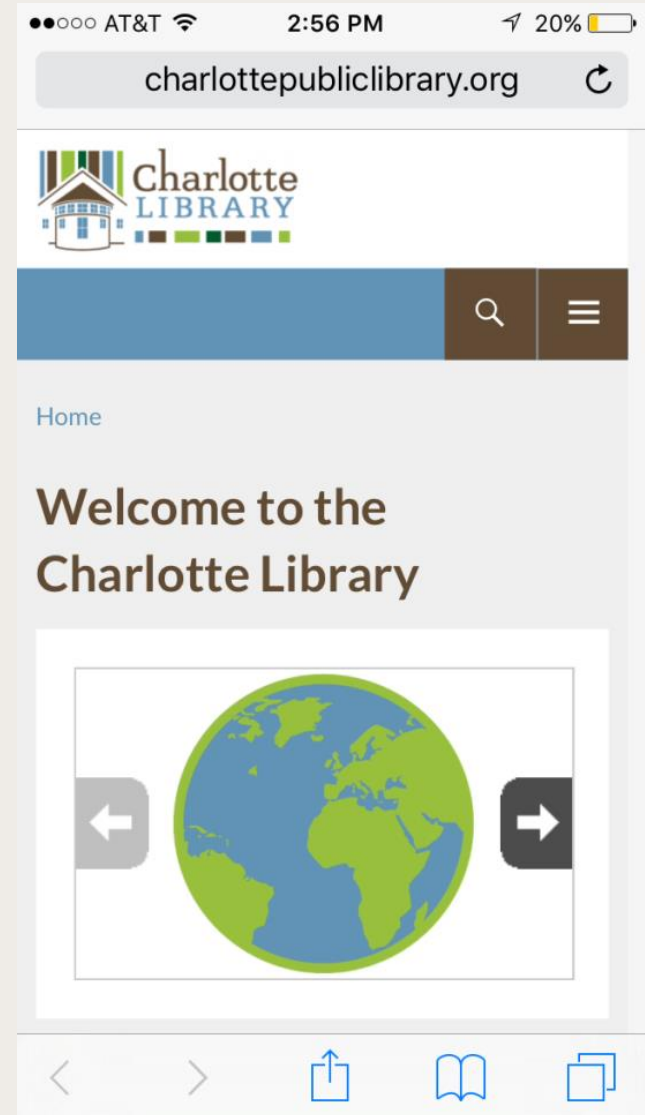


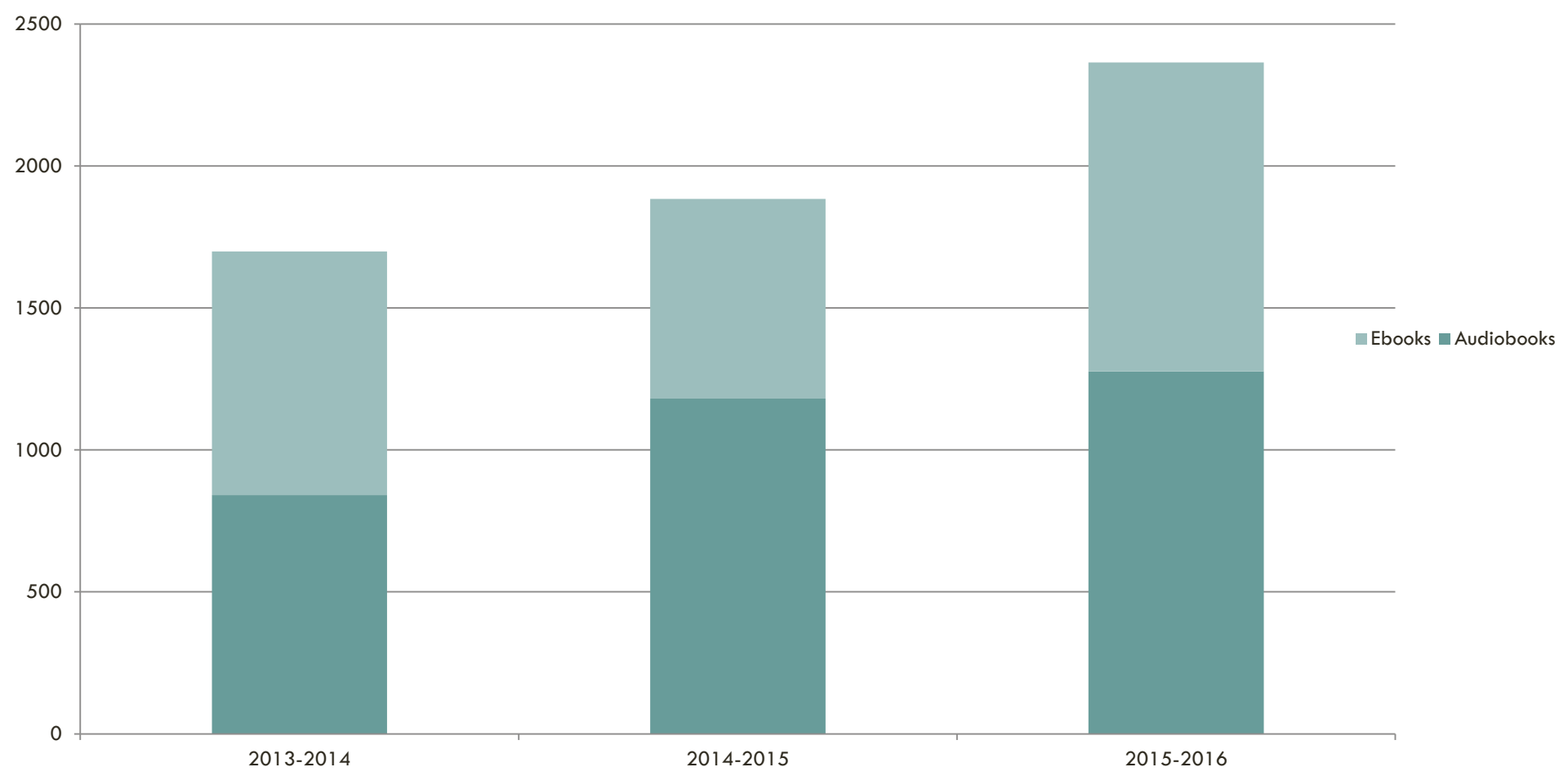


DIGITAL PATRONS



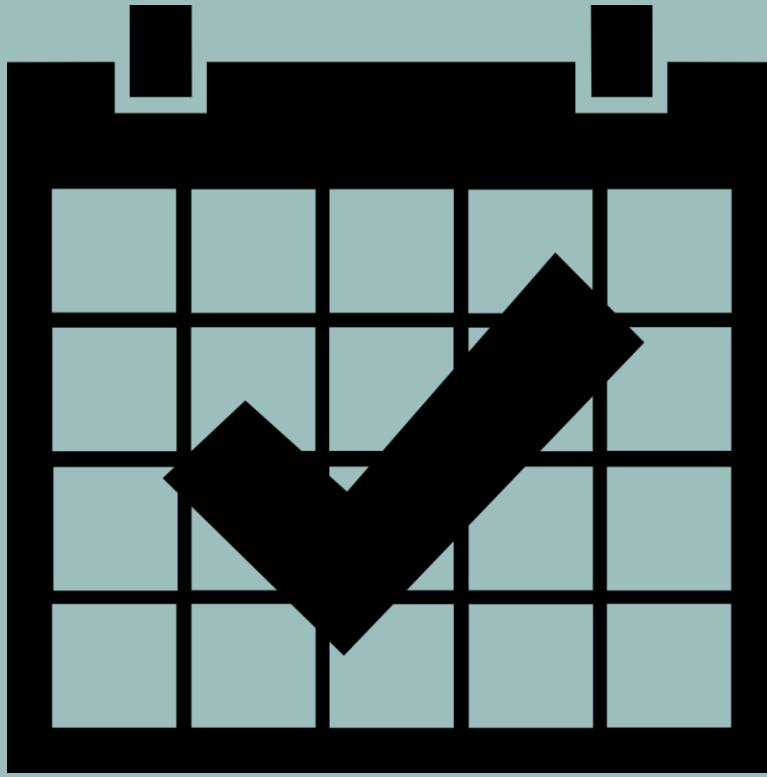
DIGITAL ACCESSIBILITY





LUV





#4 CONSISTENCY



REPETITION

SERIES VS. ONE-TIME PROGRAMS

SERIES

Book Clubs

Maker Groups

Discussions: *Being Mortal*, Great Decisions

Story Times

Classical Connections

ONE-TIME PROGRAMS

Guest Speakers: Therapy Dogs, VT Archaeology Month

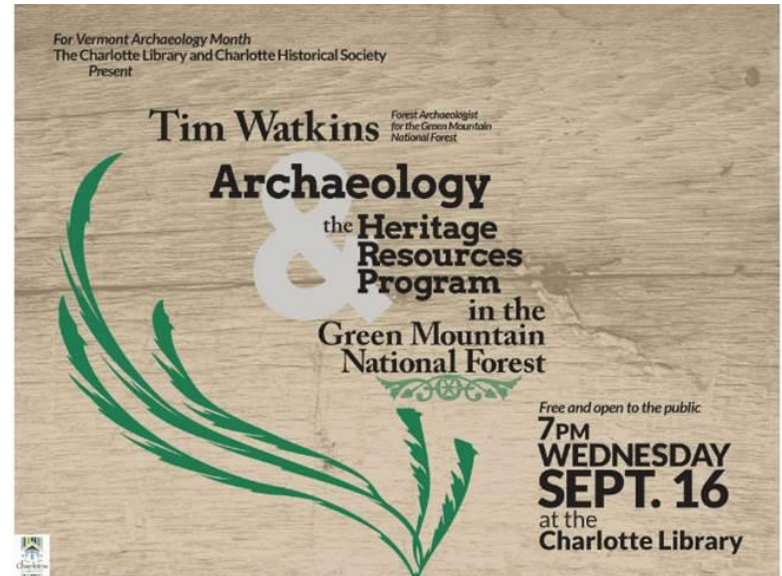
Authors: Stephen Kiernan, Liza Woodruff, local historian Dan Cole

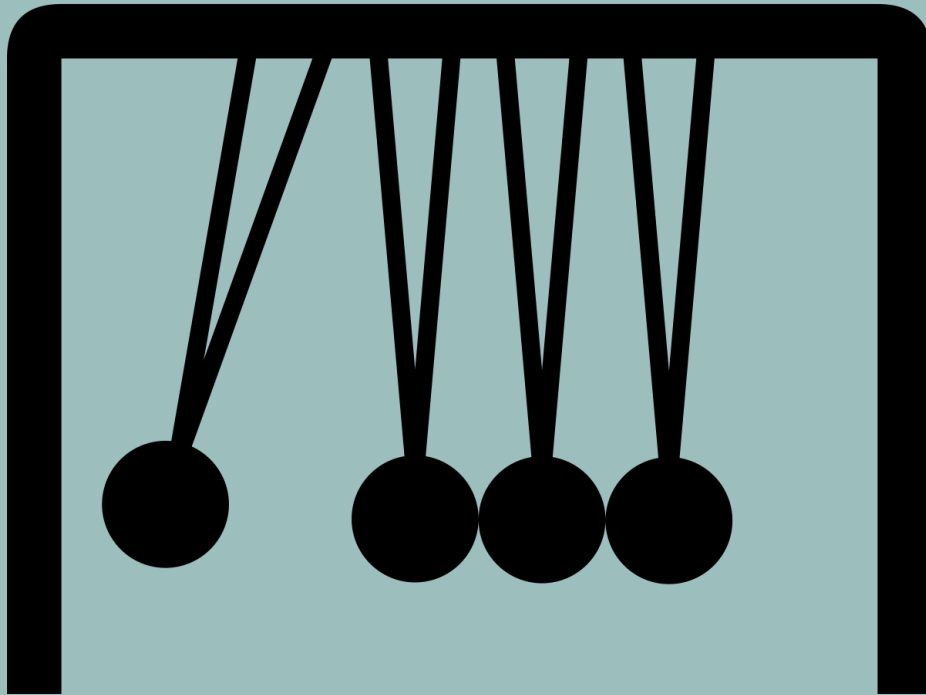
How-tos: Sourdough, Sprouts, Book Making, Tea Journals

Promotional Programs/Raise Awareness: Tech Week, Seed Library

Entertainment: Very Merry Theatre

CONNECT THE CALENDAR





#5 MOMENTUM

PROMOTION



PARTNERING



SAY "YES!"



TRIED. TRY AGAIN?

“Recipe” for Cooking Book Club

Equipment Loans

Scrabble

Charlotte Grange

Mom & Me programs



WELCOME MAT FEATURES

1. INCLUSION AWARENESS
2. COMMUNITY ENGAGEMENT
3. NEW PATRONS
4. CONSISTENCY
5. MOMENTUM



QUESTIONS? COMMENTS?

